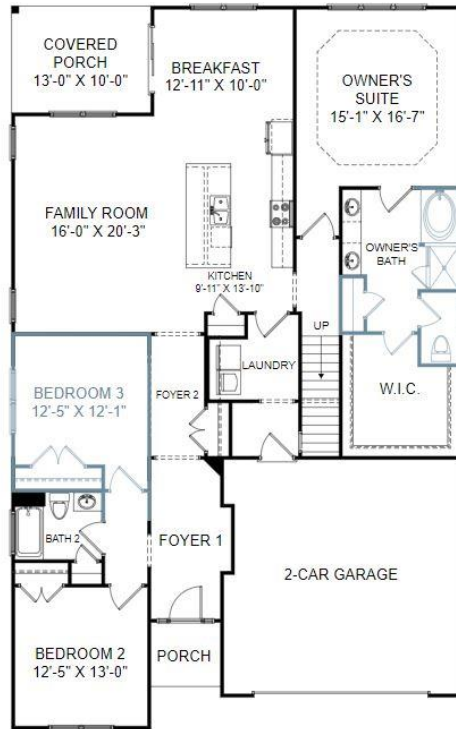
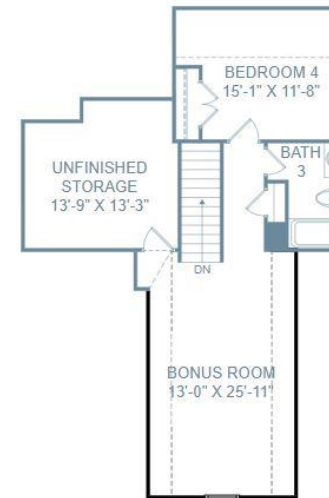


# THE MAYHEW AT THE VILLAGE AT MT. VINTAGE

Homesite 23 | 4 Bedrooms | 3 Bathrooms | 2,785 Square Feet



Main Level



Upper Level

TBD Fitzsimmons Drive North Augusta, SC

©Stanley Martin Homes | In our continued effort of design enhancement, actual product may vary in dimension or details from these drawings and are subject to change without notice. Please consult the Neighborhood Sales Manager for detailed specifications. This brochure is for illustrative purposes and not part of our legal contract.



# THE MAYHEW AT THE VILLAGE AT MT. VINTAGE

Homesite 23 | 4 Bedrooms | 3 Bathrooms | 2,785 Square Feet

TBD Fitzsimmons Drive North Augusta, SC



©Stanley Martin Homes | In our continued effort of design enhancement, actual product may vary in dimension or details from these drawings and are subject to change without notice. Please consult the Neighborhood Sales Manager for detailed specifications. This brochure is for illustrative purposes and not part of our legal contract.

